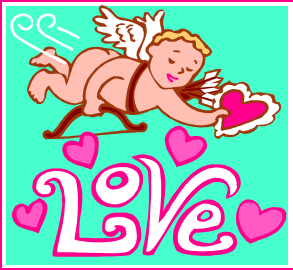


February

2012



NEWSLETTER

# Eden Village Senior Living

## Valentine's Day !

Saint Valentine's Day, commonly shortened to Valentine's Day is an annual commemoration held on February, 14 celebrating love and affection between intimate companions.

The first Valentine's Day became associated with romantic love in the circle of Geoffrey Chaucer in the High Middle Ages, when the tradition of courtly love flourished.

This is the first written Valentine's card by Geoffrey Chaucer:

*For this was Saint Valentine's day, when every bird cometh there to choose his mate.*

This card was written to honor the first anniversary of the engagement of King Richard II of England to Ann of Bohemia.

Modern Valentine's Day symbols include the heart-shaped outline, doves, and the figure of the winged Cupid. Since the 19th century, handwritten valentines have given way to mass-produced greeting cards.

*Be My Valentine !*



### Inside this issue:

Monthly Dinner	2
Massages	2
Birthdays	2
Bus Outings	3
Resident Choice Meal	3
Music	4
Poetry	4

### Senior Living Contacts

- *Beth Breihan, Executive Director*  
205-4640
- *Tina Kassing Meurer, Senior Living Administrator*  
205-4637
- *Brenda Wilkinson, Social Programs Coordinator*  
205-4621
- *John Brownlee, Transportation*  
205-4619
- *Carolyn "Sis" May, General Store*  
205-4623



## MENU

Mushroom, Ham, and Cheese Quiche  
Broccoli  
Fresh Fruit  
Rolls  
OJ

Tuesday, February 7 at noon.

The Kindergarten Class of Glen Carbon Elementary School, will be here on Monday, February 13 at 11:00, to sing for us.

Join us in the Atrium.

## **Bingo**

Please join Kimberly from Amedisys on Wednesday, February 1 and 29 at 3:30, for Bingo.

Bingo will be held in the second floor dining room in the Assisted Living Building.



---

## Alaska's Fiddling Poet

Wednesday, February 22 at 4:00p.m., we will go to dinner at Pasta House. Following we will go to SIUE, to see Ken Waldman "Alaska's Fiddling Poet".

Tickets are free. This program starts at 7:30pm

Sign up with Brenda at ext 1321 or 205 - 4621 by Monday, February 20.



---

## Bus Outings

The bus will take residents shopping to Wal-Mart every Thursday at 10:00am and 11:00am. Also local shopping at 1:30 pm, weather permitting.

Breakfast at Cracker Barrel with Kent Holsinger on Friday, February 3 at 9:00 am.

Men's Group going to IHOP on Friday, February 10 at 9:00 am.

Lunch at Long Horn Steak House or St Clair Square on Saturday, February 18 at 11:00 am.

Dinner at Pasta House and to see Ken Waldmann on Wednesday, February 22 at 4:00 pm.

Red Hat Lunch outing to Alfonzo's Rest. on Monday, February 27 at 11:15am.



## February Music

**Bob Tyler : Monday, February 6 at 6:00pm.**

**Bob Artime: Tuesday, February 21 at 2:30pm**

**Lynn Wellmann : Tuesday, February 28 at 6:30 pm.**



Plan to attend these musical performances in the Atrium.



### Be My Valentine, My Love



Be my Valentine, my love,  
As I will be for you,  
And we will love the whole day long,  
And love our whole lives through.  
For love has no boundaries,  
And does not end with time,  
But is the gift of paradise,  
A pinch of the sublime.  
So let us take this holiday,  
To resubmit our love,  
To those within that know no sin,  
And with the angels from above.

